

Extra Credit Assignment – Pictures of local trusses

Students can earn up to 3 points of extra credit to be added to their final course average by taking up to 9 pictures of trusses in the Hampton Roads area according to the specifications listed below.

For all truss photos, please note the following:

- **You** must take the pictures. No photos from the internet or from other sources can be used.
- Only trusses are allowed. No beams, girders, or other types of supports.
- Examples of trusses include bridge supports, roof supports (such as in attics or under picnic shelters, awnings, etc.), sign supports, and radio towers.
- Take photos such that the truss is as large as possible (fills most of the picture).
- Duplicate or very similar structures are not allowed. For example, you cannot submit pictures of two different cell phone towers or two different electrical towers.
- No students can submit the same picture.
- Beware of taking photos in security-sensitive areas. One student in a previous class had a camera confiscated by security personnel.
- If you wish to submit trusses outside the Hampton Roads area, seek the instructor's permission ahead of time.
- Pictures used for one part below cannot also be used for another part below.
- Clearly indicate which part (Part 1, Part 2, or Part 3) each picture is satisfying.
- Do not use the examples included in this document.

Part 1: Any trusses – up to 5 photos (1/3 pt each)

- List the location, date the picture was taken, any other useful information with each picture, and the photographer. See attached examples.

Part 2: Specific types of trusses – up to 4 photos (1/3 pt each)

- List the location, date the picture was taken, any other useful information with each picture, and the photographer. See attached examples.
- List the type of truss (Pratt, Warren, Baltimore, Fink, etc)
- Show a picture from the text, class notes, etc., showing the type of truss identified.

Part 3: Zero-force members – up to 1 photo (1/3 pt)

- List the location, date the picture was taken, any other useful information with each picture, and the photographer. See attached examples.
- Circle or identify the zero-force member.

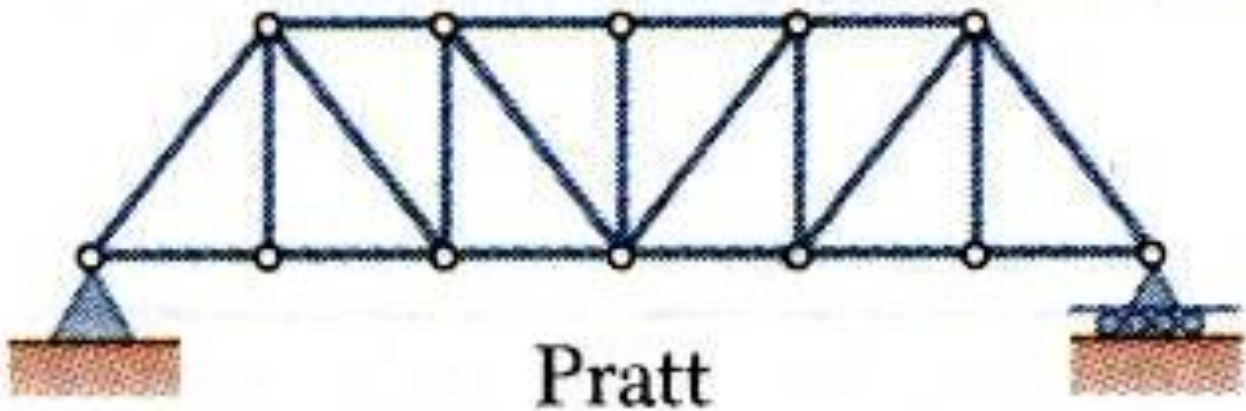
Part 2 (Specific types of trusses) – Example 1

Location: Pedestrian Walkway over Brambleton Avenue in Norfolk (near EVMS)

Date: 7-1-xx

Photographer: Paul Gordy

Type of truss: Pratt bridge truss (see illustration below from class notes)

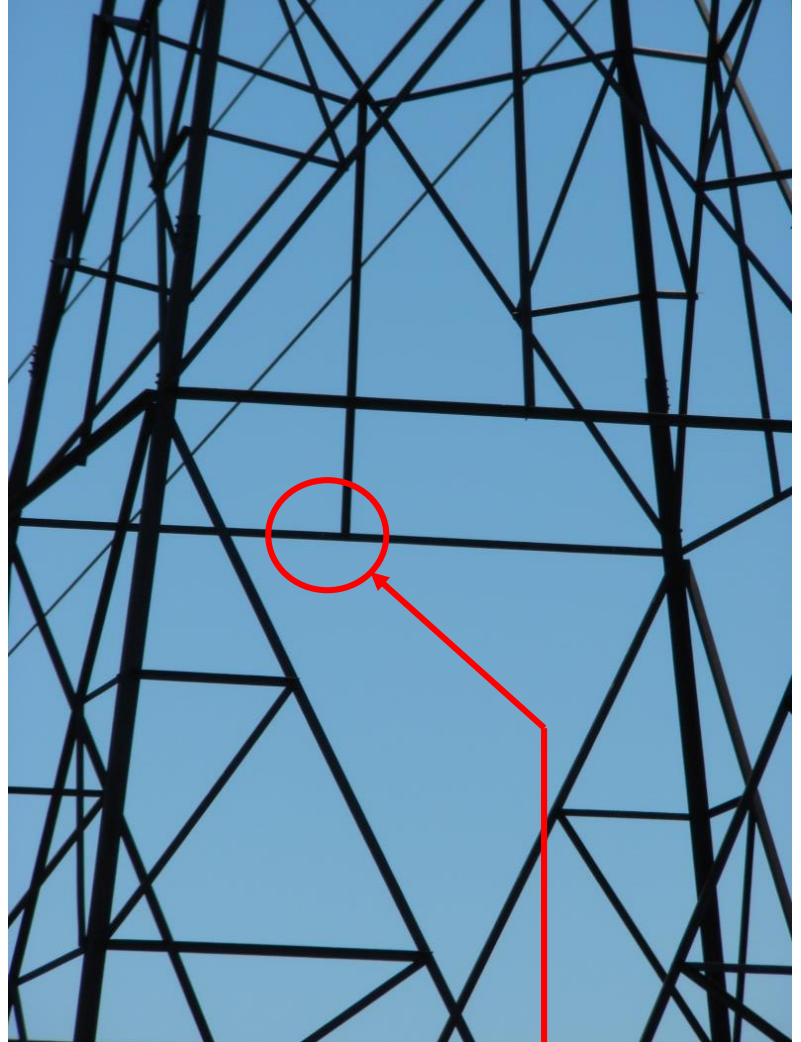


Part 3 (Zero-force members) – Example 1

Location: Electrical tower on Salem Road (near S. Independence Blvd) in Virginia Beach. A close-up picture of the zero-force member is provided on the right.

Date: 7-2-xx

Taken by: Paul Gordy



**Zero-force member
(the vertical member)**