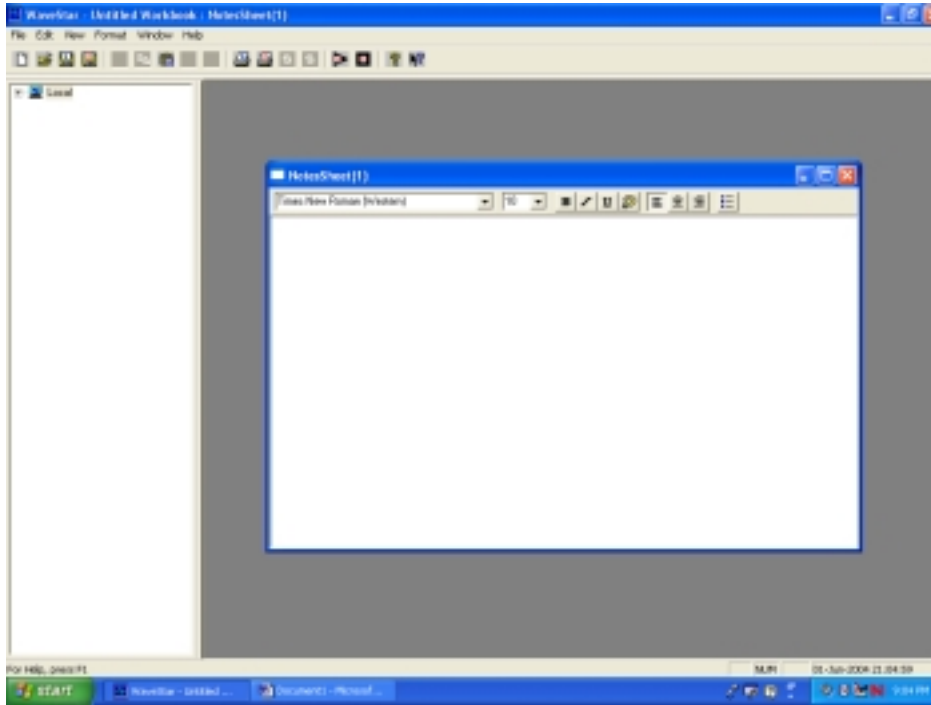


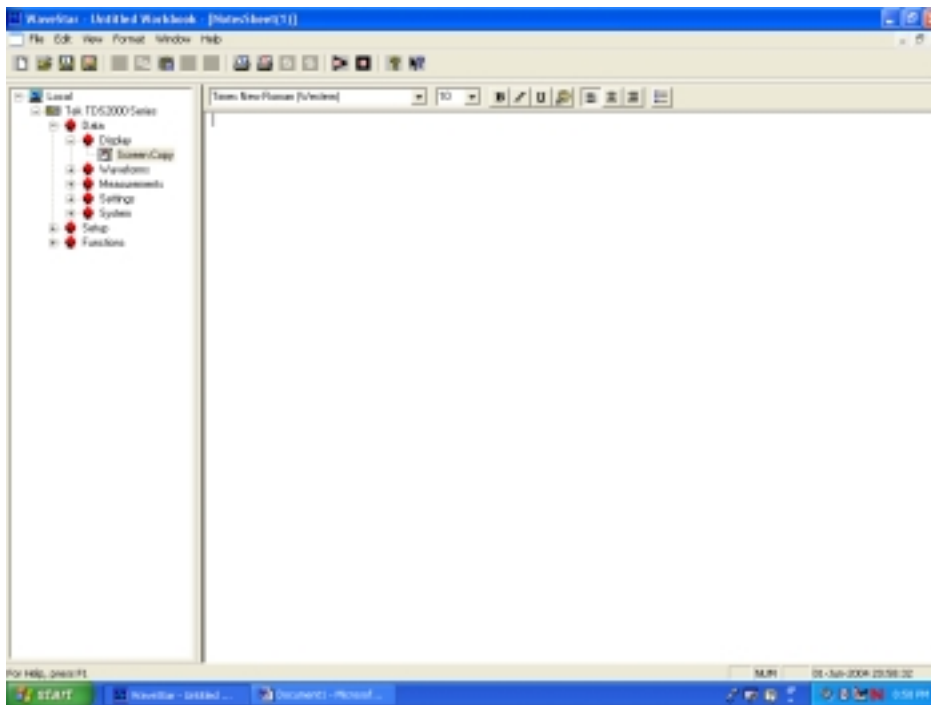
Capturing Oscilloscope Images Using Wavestar

(Note: You may need to turn on the oscilloscope **before** the computer in order to use Wavestar.)

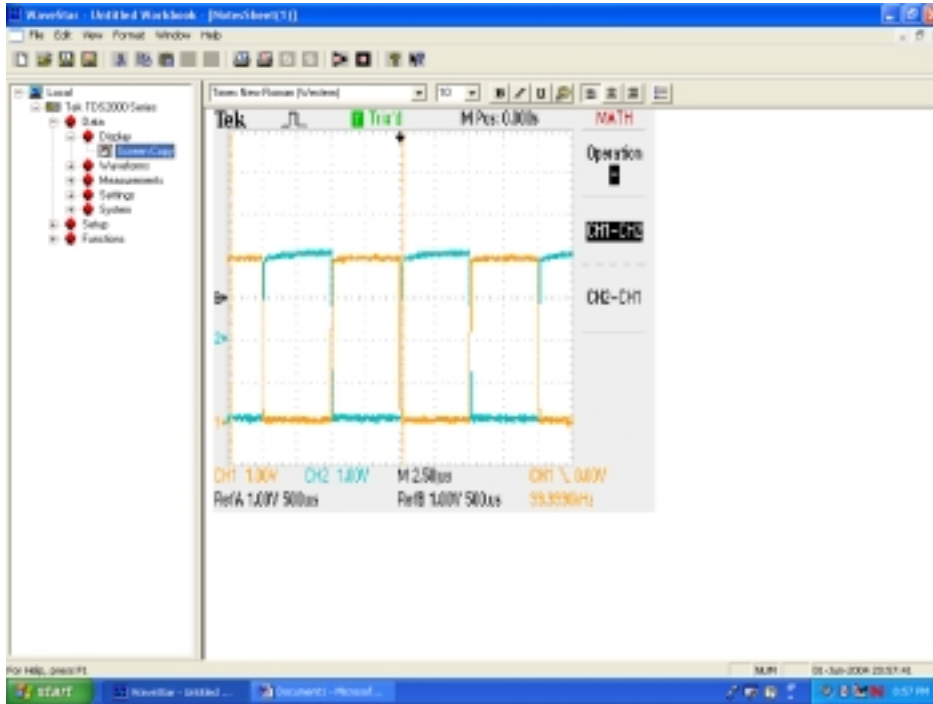
1. Launch the **Wavestar for Oscilloscopes** program (icon on desktop)
2. Select File – New Data Sheet – Notesheet (see below)



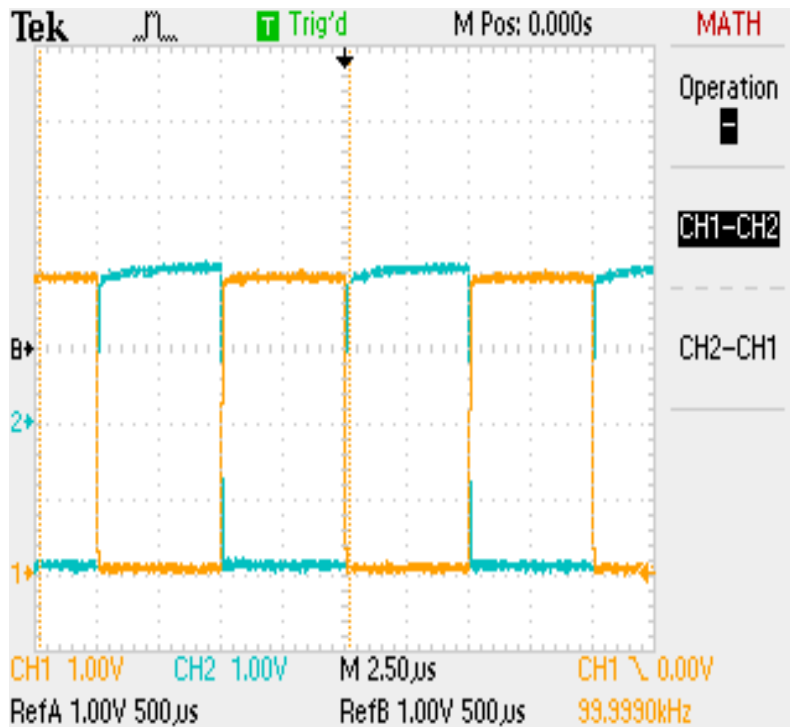
3. Expand the folder structure on the left and maximize the Notesheet on the right (see below)



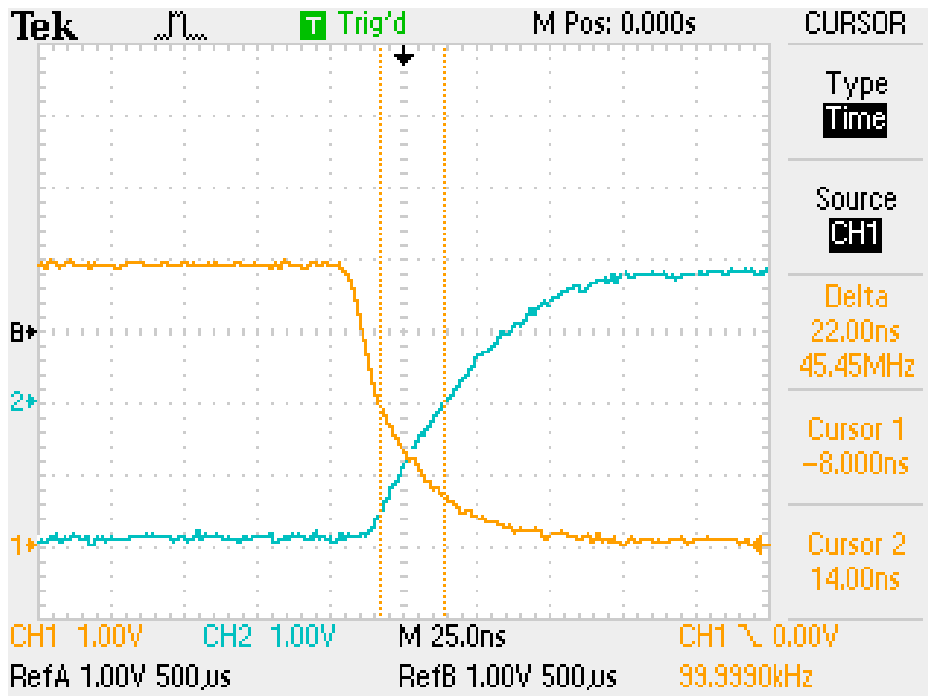
4. Drag Screen Copy from the left part of the screen to the right part of the screen (see below). You can then select (click on with mouse) the image on the right and copy it to the clipboard where it can be pasted into any application, such as Microsoft Word.



5. A) **Example:** Measuring propagation delay (Channel 1 is the input to an inverter and Channel 2 is the output). Note that the delay can't be seen here, so the transition area is magnified on the next two screen captures.



B) Measuring t_{PLH} (the output is changing from L to H).



C) Measuring t_{PHL} (the output is changing from H to L).

